

*Shetland*  
HERITAGE  
PATTERN

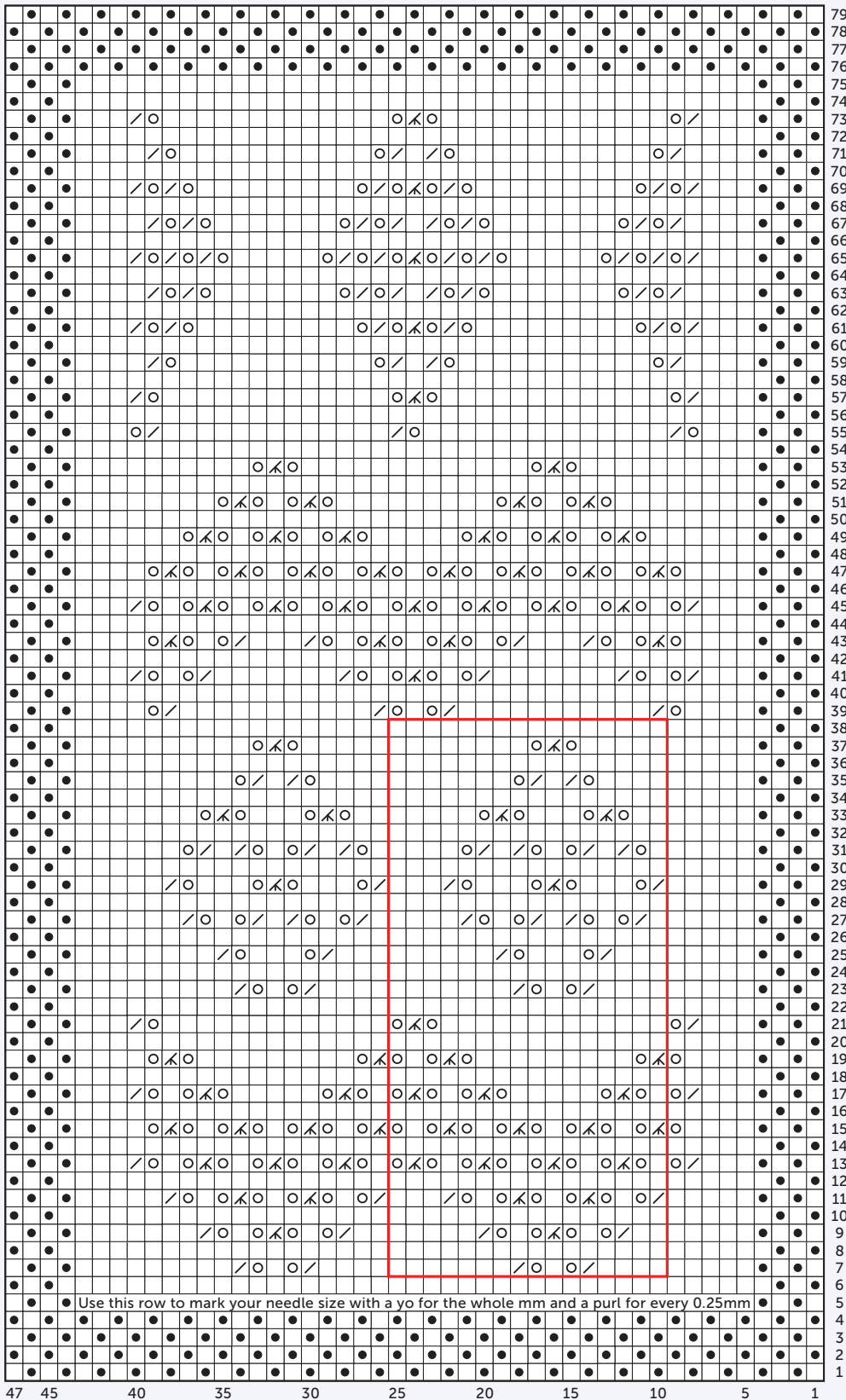
HAZEL LAURENSEN  
*for Unst Heritage Centre*

MERRAN'S  
CARDIGAN

CHARTS SIZES 4-7



Swatch chart



Key

- Knit on RS, purl on WS
- Purl on RS, knit on WS
- K2tog
- K3tog
- Yarnover

Red box shows one repeat of the lace, which measures 5.5cm wide and 9.5cm high if your tension is correct

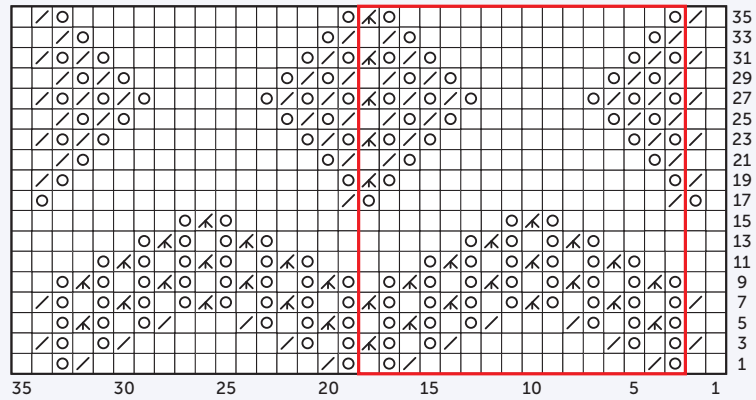
Cast on 47 sts – 4st selvedge plus 3 sts in st st either side of lace repeat

● Use this row to mark your needle size with a yo for the whole mm and a purl for every 0.25mm



Work immediately after rib, before Chart A, if you wish to knit a longer cardigan

Chart A Extension



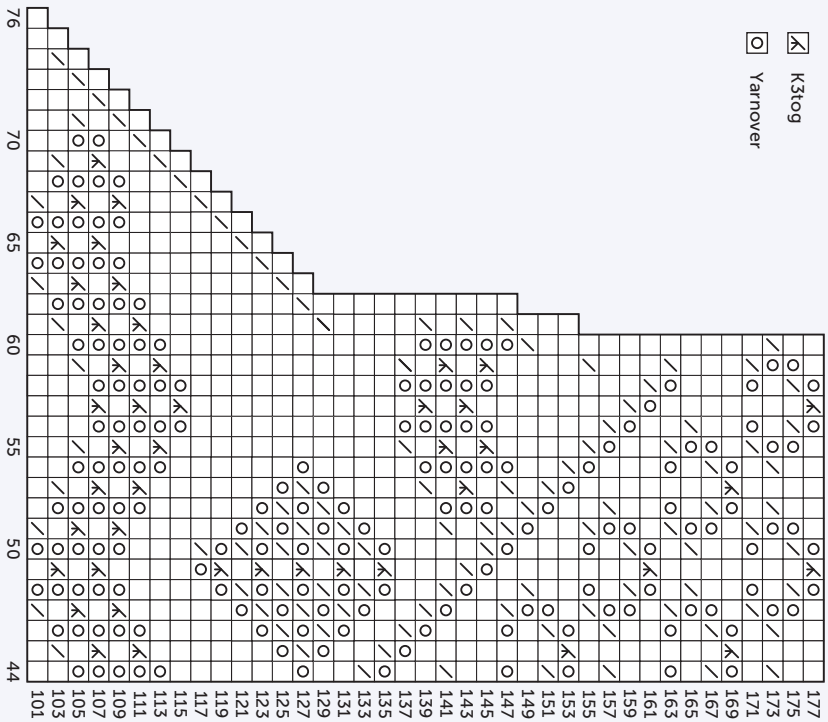
Key

- Knit
- K2tog
- K3tog
- Yarnover
- Repeat

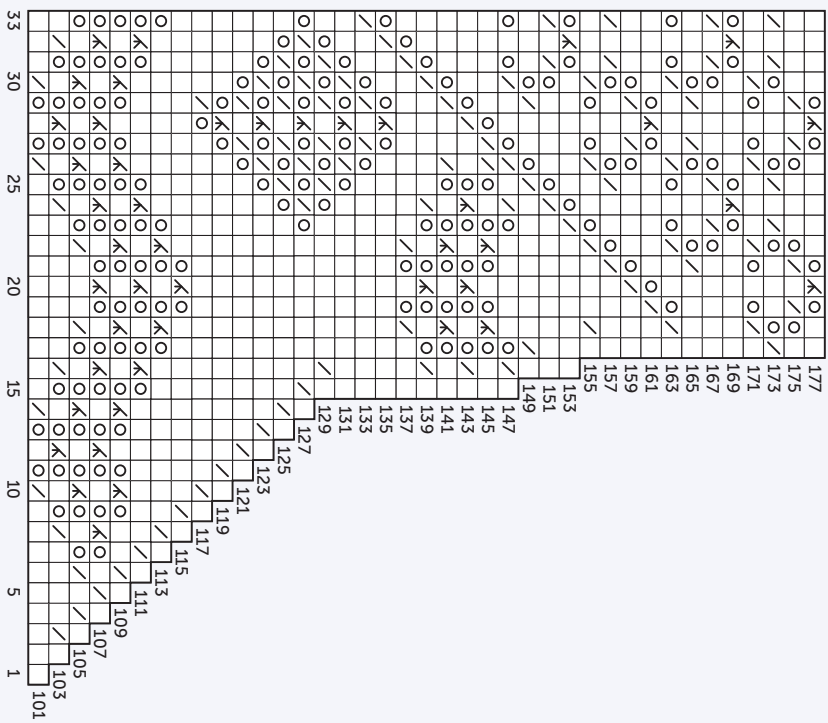
# SIZE 4

- Key**
- Knit
  - K2tog
  - K3tog
  - Yarnover

**Chart C**  
Right Armhole  
Size 4



**Chart E**  
Left Armhole  
Size 4



# SIZE 4

- Key
- Knit
  - K2tog
  - K3tog
  - Yarnover

Chart D  
Right Armhole  
Size 4

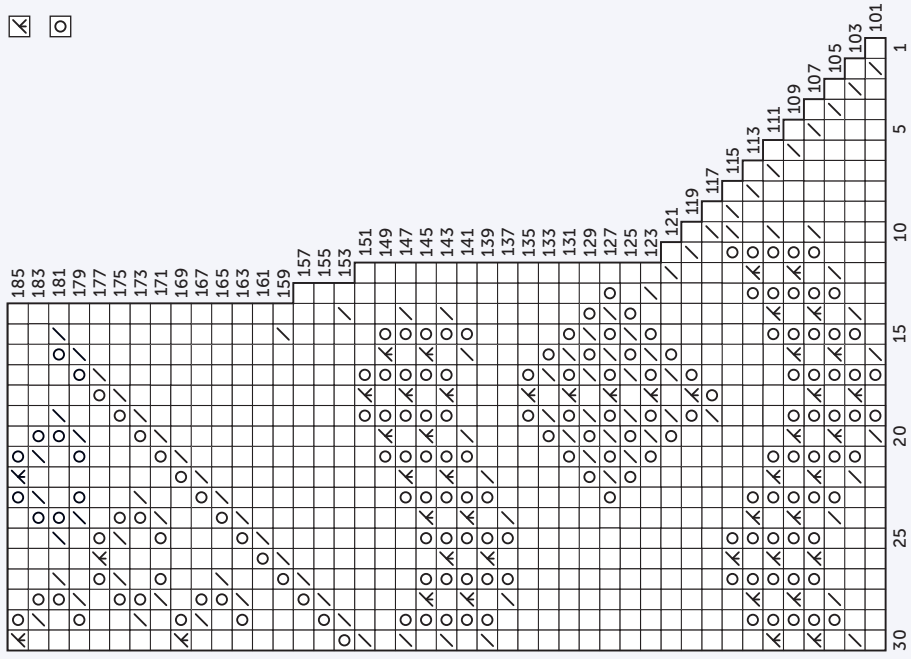
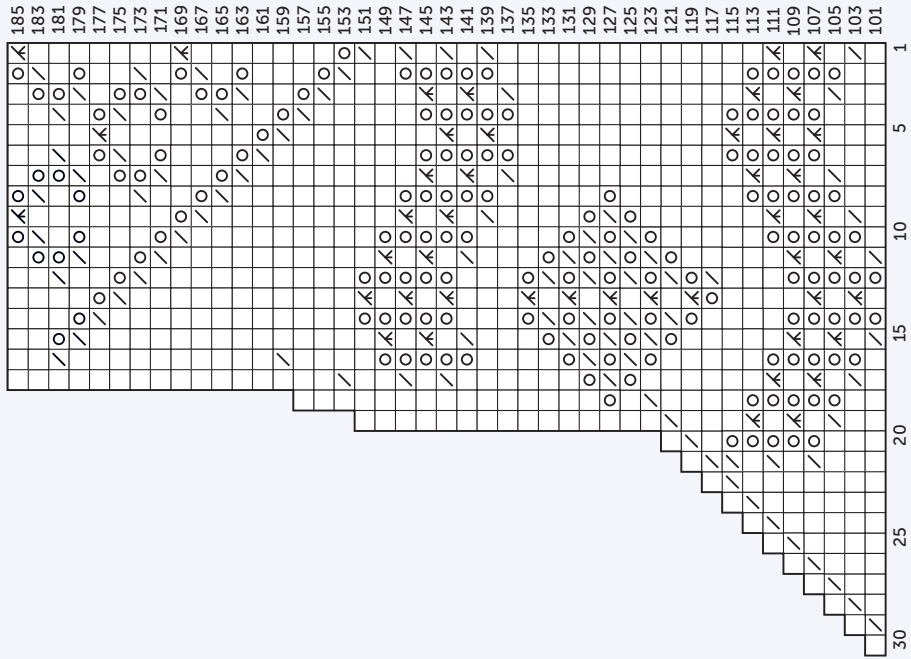


Chart D  
Left Armhole  
Size 4



# SIZE 5

## Key

- Knit
- K2tog
- K3tog
- Yarnover

Chart C  
Right Armhole  
Size 5

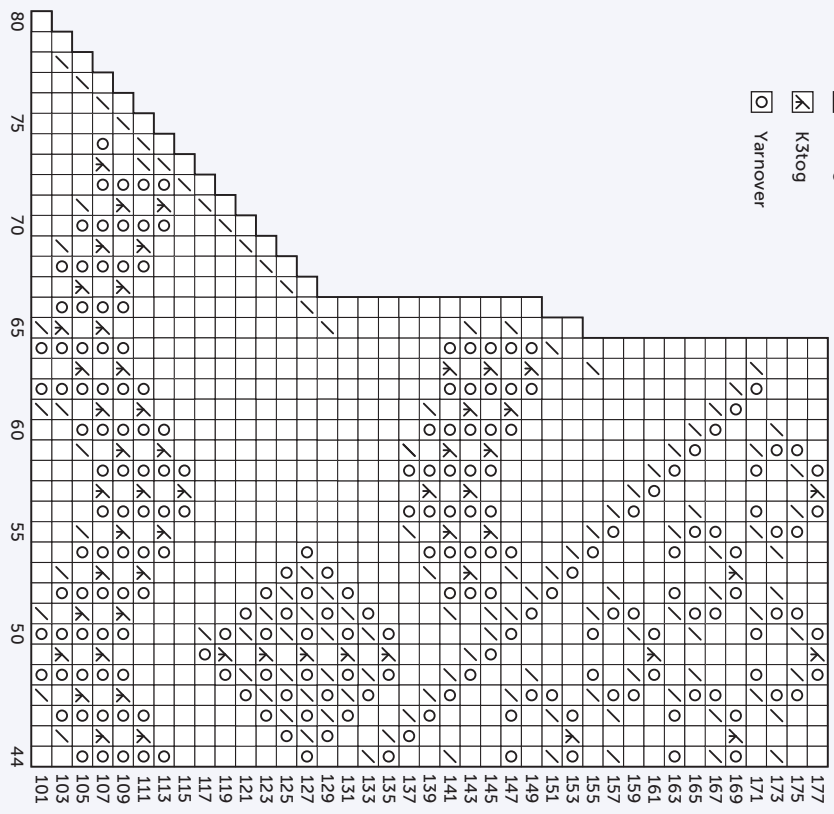
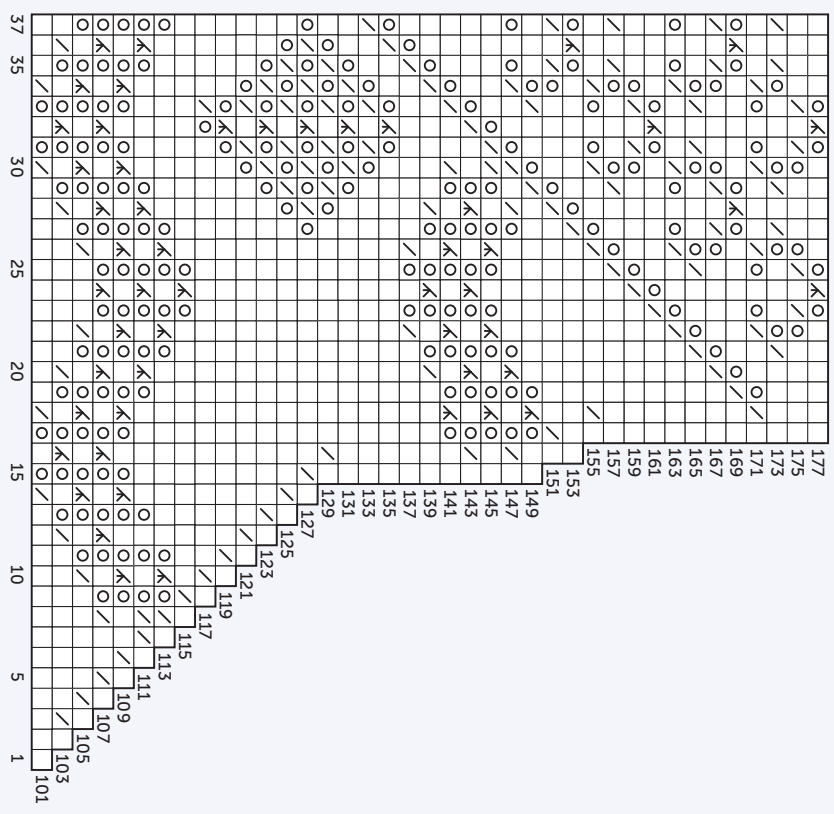


Chart E  
Left Armhole  
Size 5



# SIZE 5

Chart D  
Left Armhole  
Size 5

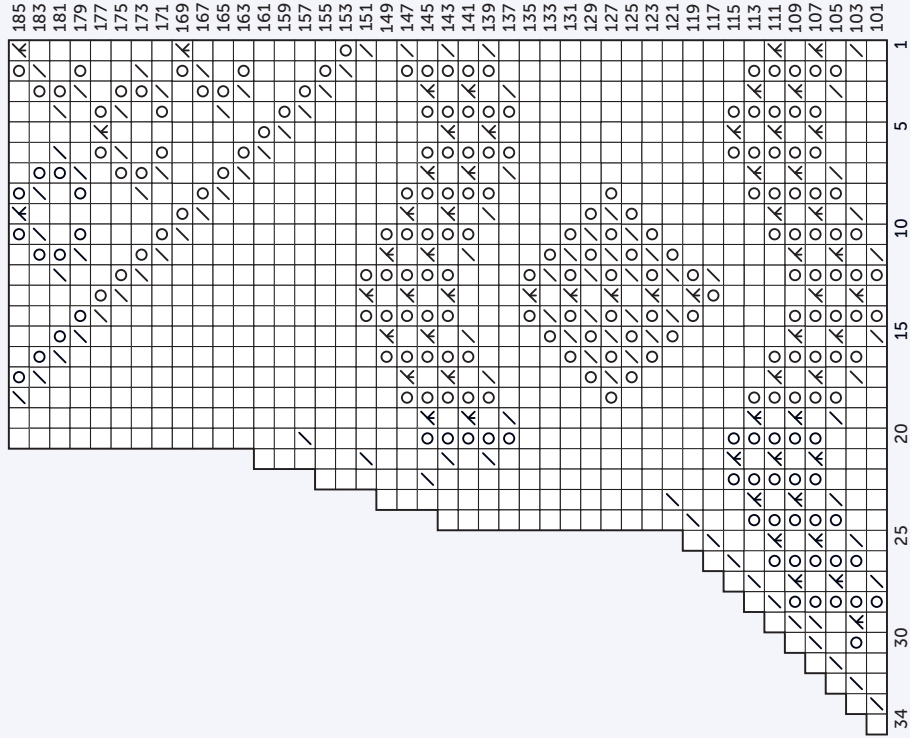
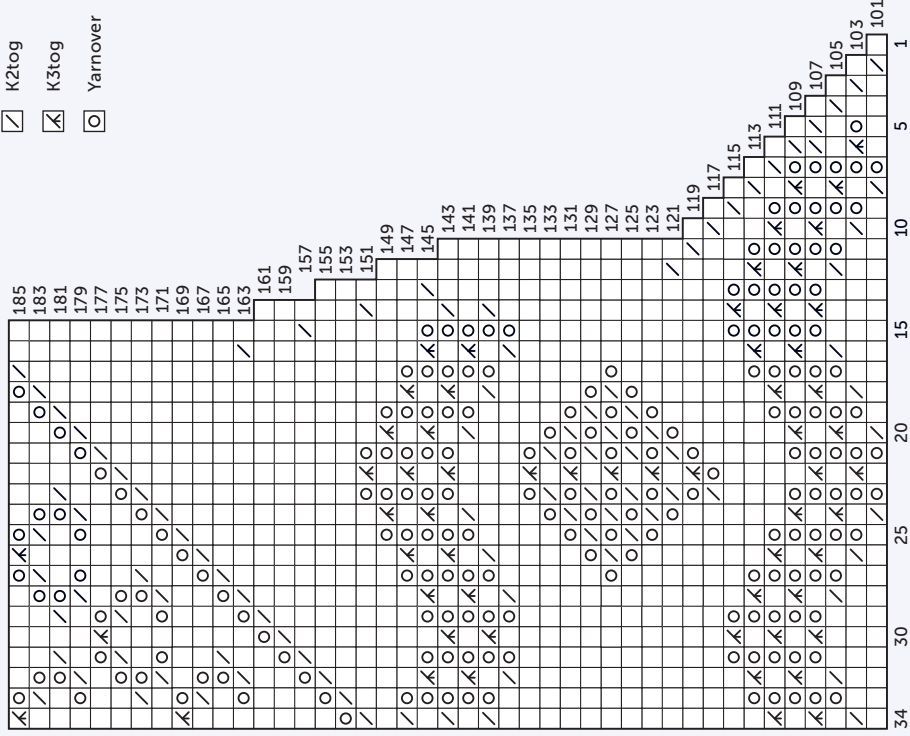


Chart D  
Right Armhole  
Size 5



- Key
- Knit
  - K2tog
  - K3tog
  - Yarnover

# SIZE 6

## Key

- Knit
- K2tog
- K3tog
- Yarnover

Chart C  
Right Armhole  
Size 6

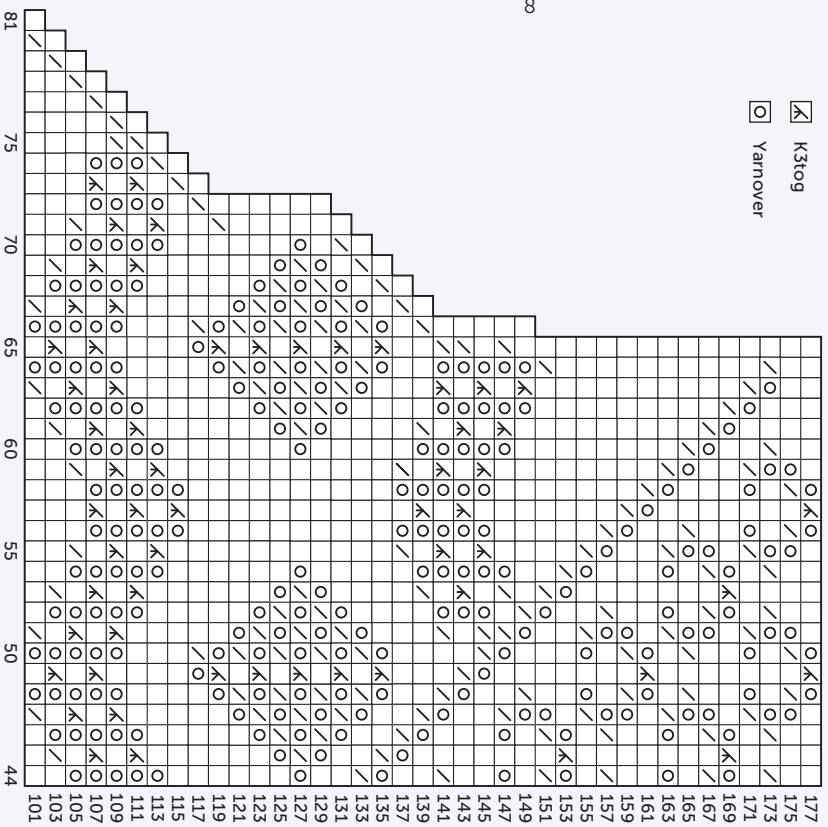
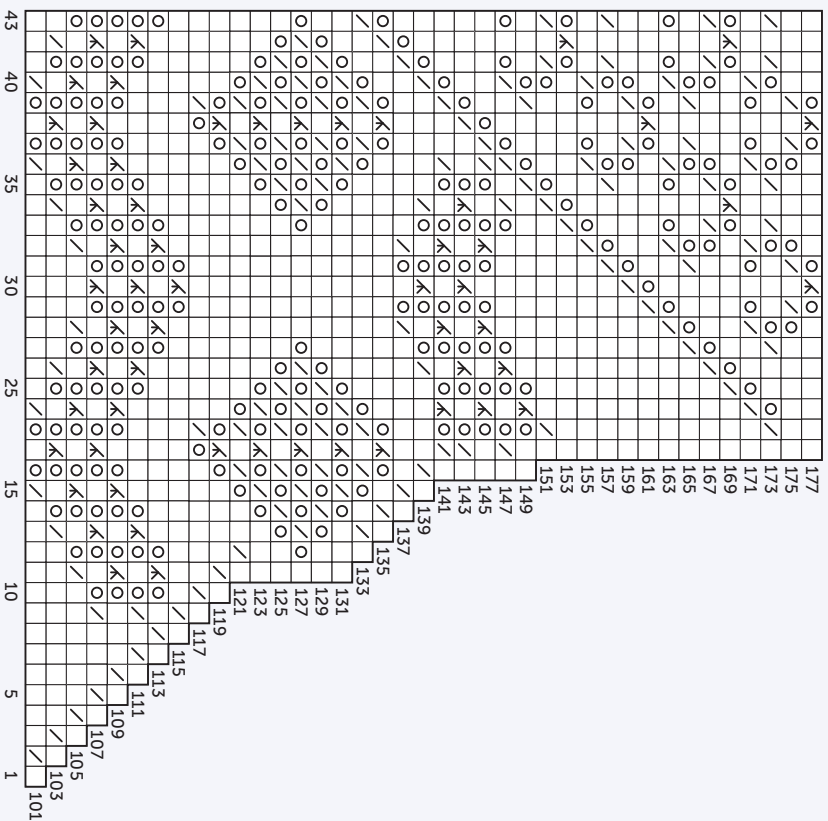


Chart E  
Left Armhole  
Size 6





# SIZE 6

- Key
- Knit
  - K2tog
  - K3tog
  - Yarnover

Chart D  
Right Armhole  
Size 6

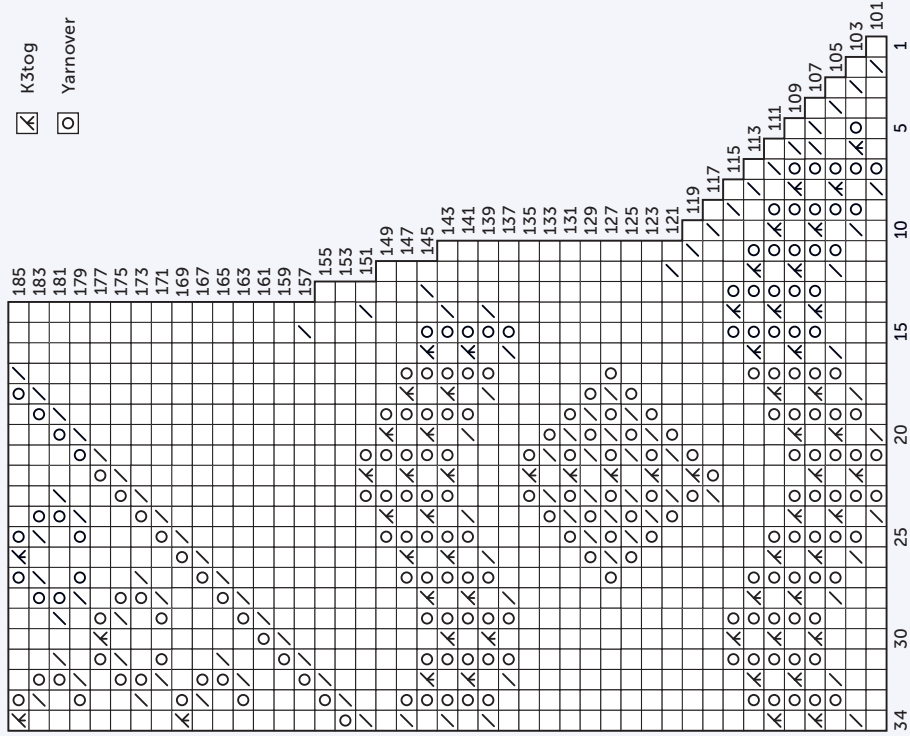


Chart D  
Left Armhole  
Size 6

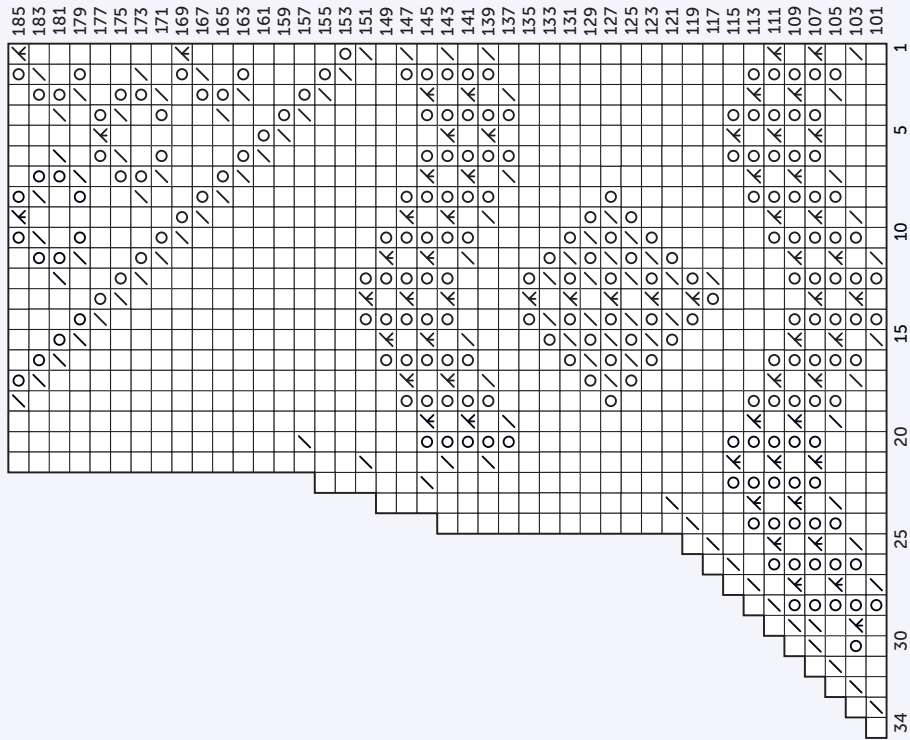
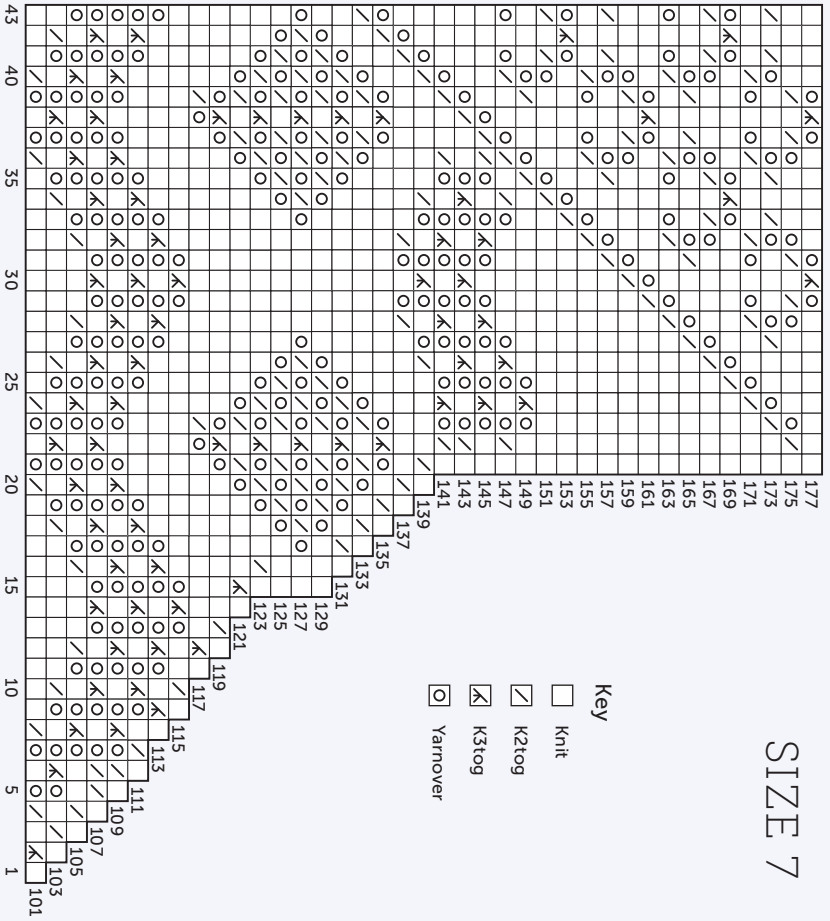


Chart E  
Left Armhole  
Size 7

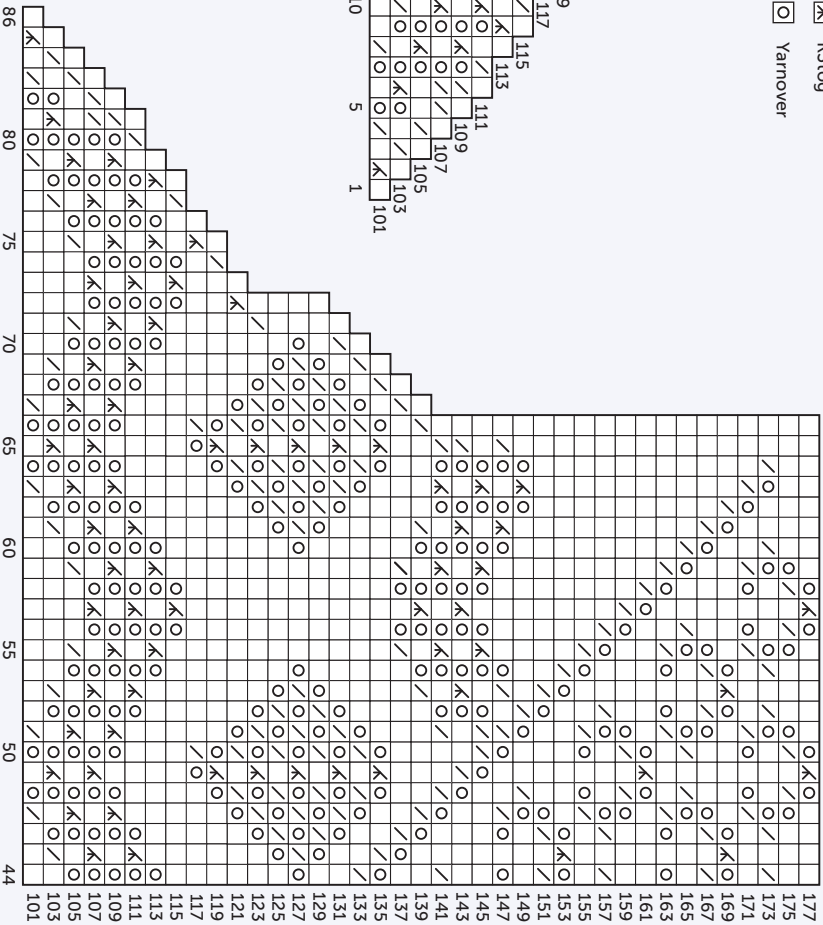


SIZE 7

Key

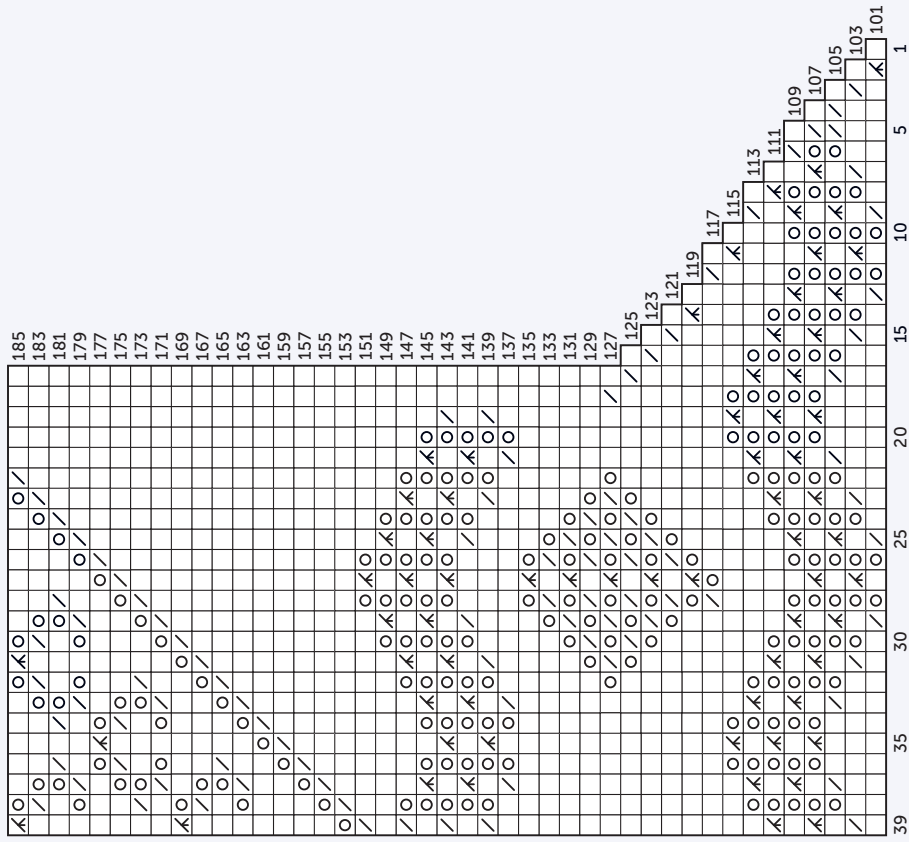
- Knit
- R2tog
- K3tog
- Yarnover

Chart C  
Right Armhole  
Size 7



# SIZE 7

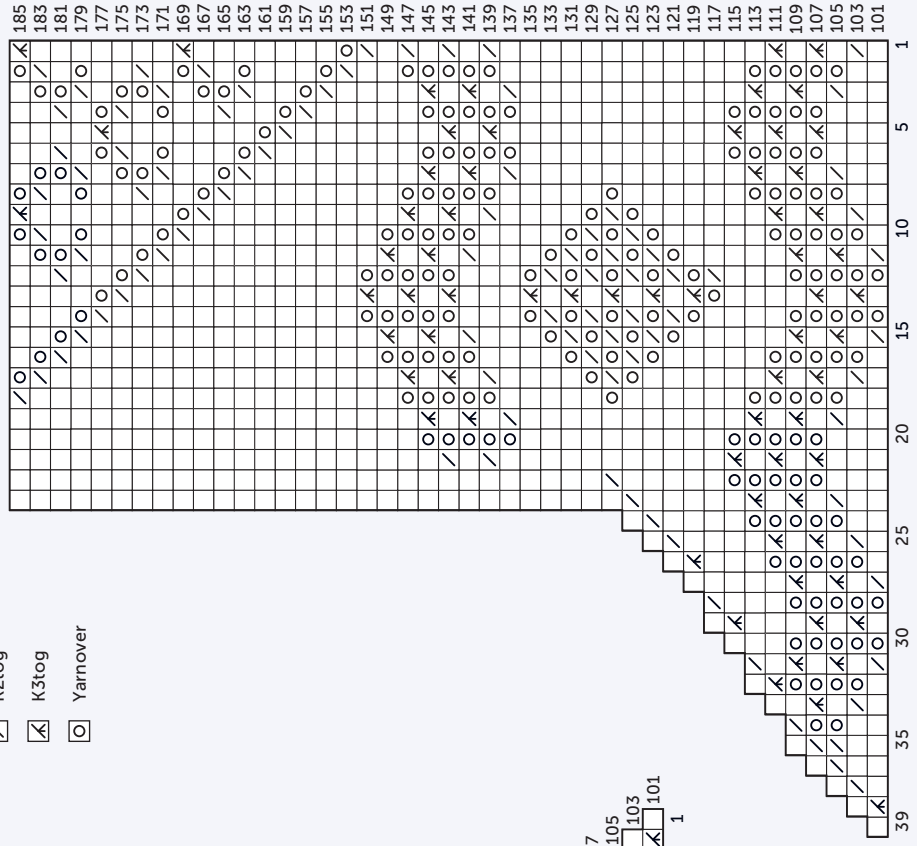
Chart D  
Right Armhole  
Size 7



Key

- Knit
- K2tog
- K3tog
- Yarnover

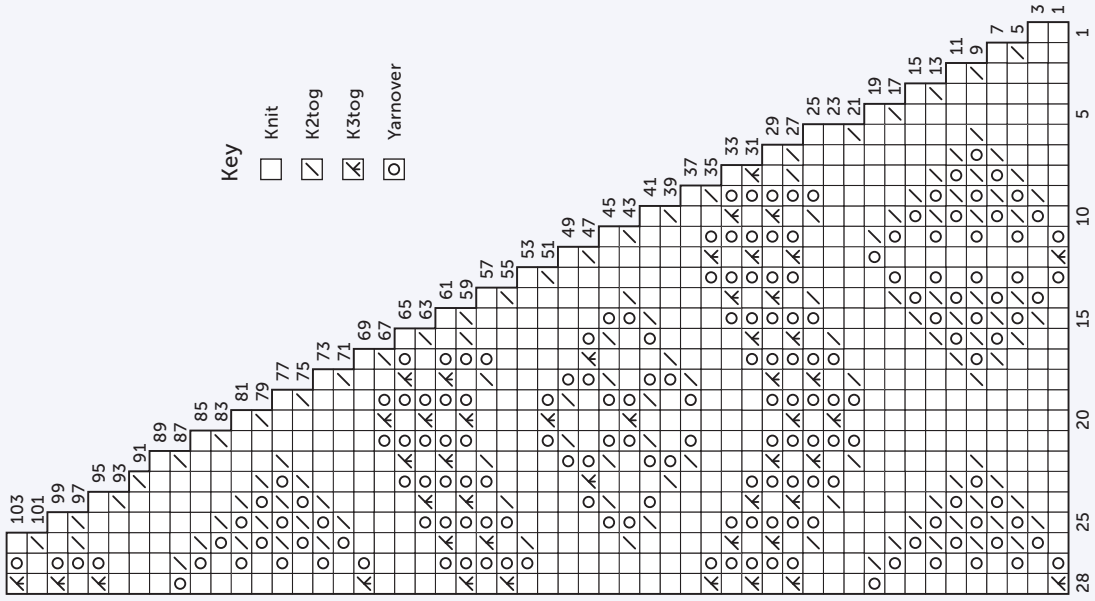
Chart D  
Left Armhole  
Size 7





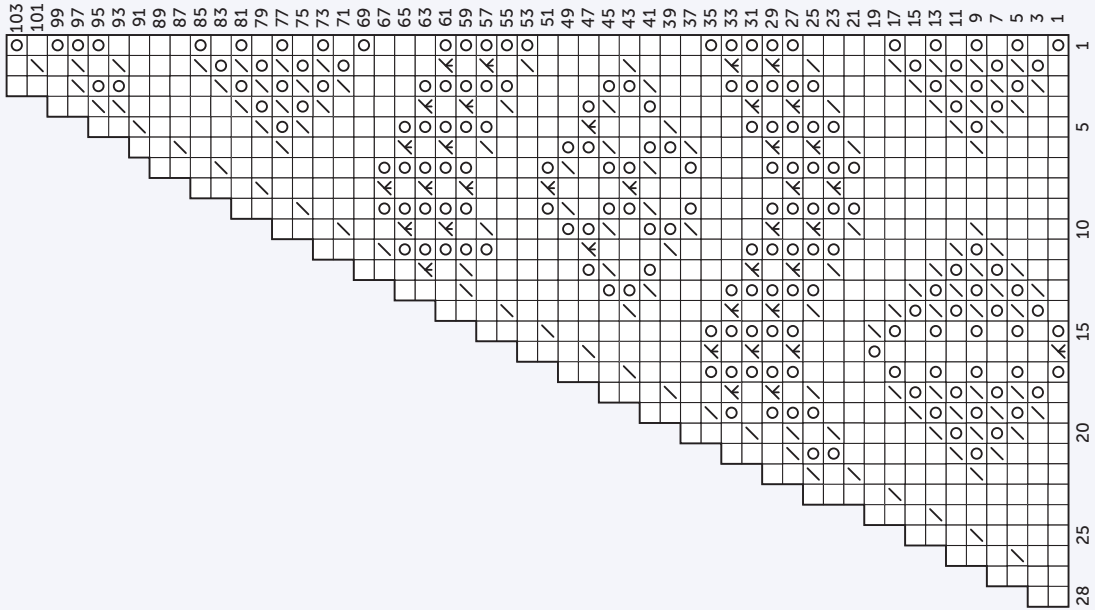
CASTING ON  
SHETLAND  
*woolWeek*

Sleeve Chart 1  
Right Side  
Size 4-7



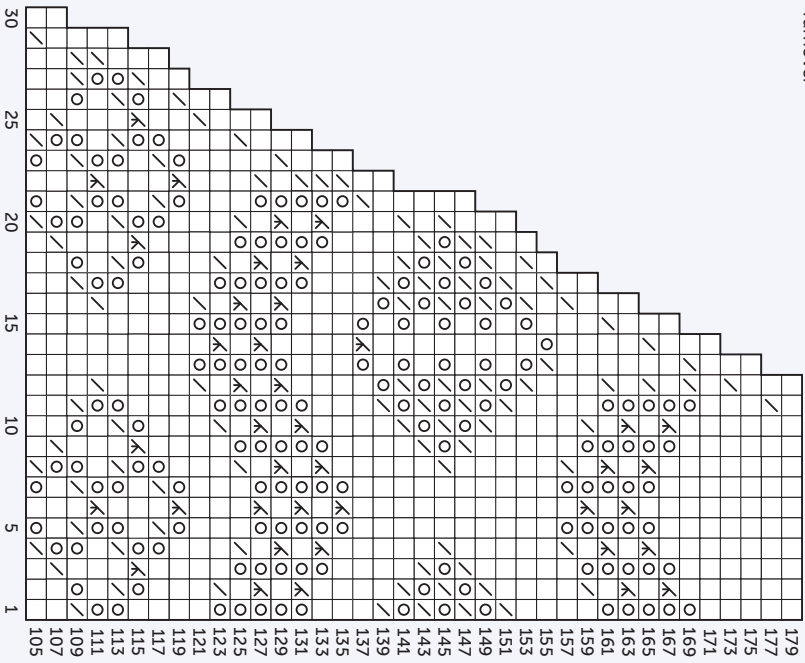
Key  
 □ Knit  
 / K2tog  
 / K3tog  
 ○ Yarnover

Sleeve Chart 1  
Left Side  
Size 4-7



- Key
- Knit
  - ▤ K2tog
  - ▥ K3tog
  - Yarnover

Sleeve Chart 2  
Left Edge  
Size 6-8-7



Sleeve Chart 2  
Right Edge  
Size 6-8-7

